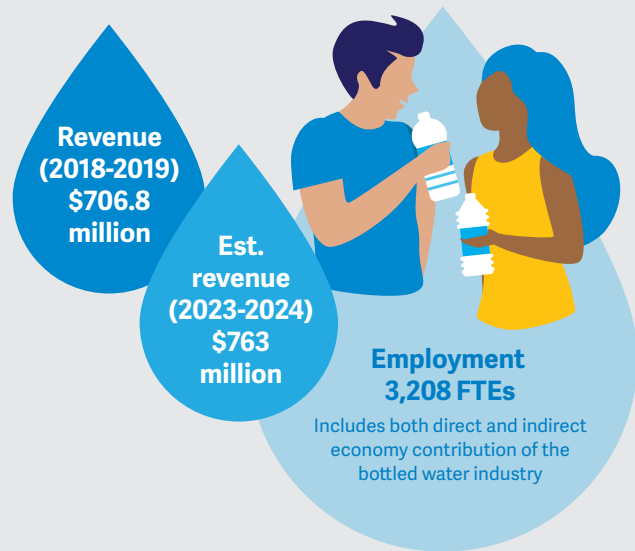


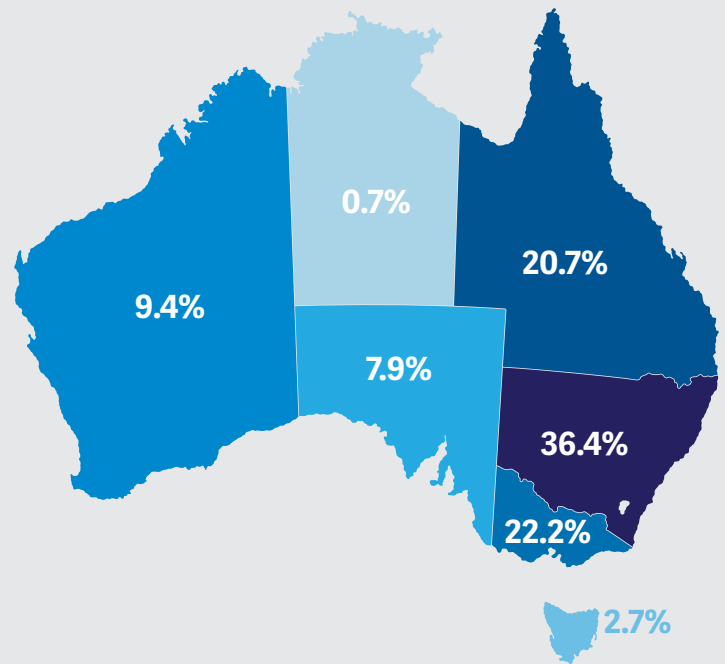
The Economics of Water

The packaged water industry contributes to the Australian economy in a variety of ways, including employment generated by the beverages industry in manufacturing, packaging, transport and retail^{1,6}.



Locations of Enterprises in the Industry, 2018 – 19¹

The packaged water industry has a presence in every state and territory:



Responsible Packaging

ABWI Members strongly support the use of recycled materials in the manufacturing process.

The ABCL and its Members support convenient recycling programs for consumers and businesses and the development of Container Deposit Schemes across Australia. The objectives of these are to increase recycling and reduce litter from beverages containers.

Bottled water has one of the lowest environmental footprints of any commercial beverage⁷. Several industry initiatives include:

- many plastic bottles are 100% recyclable,
- at least 50% recycled PET,
- reduction in level of plastic in bottles and cap,
- onsite blow-filling technology of bottles allowing for savings in carbon dioxide emissions.

Water Stewardship

The packaged water industry uses groundwater as its main source of water. High-quality, refreshing groundwater is a natural resource that is replenished through the hydrological cycle.

ABWI supports responsible water source management through the continuous and rigorous assessment of source sustainability. ABWI-certified source owners are required to ensure the sustainability of water sources as part of the initial and ongoing accreditation process. Regular reports, including hydrogeological studies, on the quality of each source and adherence to the ABWI Model Code are non-negotiable criteria of ABWI membership.

ABWI Members recognise the value of good water stewardship, and pro-actively support environmental protection and management initiatives. For example, significant efforts have been made to reduce water use through process improvements.

The Australasian Bottled Water Institute

ABWI is a dedicated division of the Australian Beverages Council. ABWI is the bottled water industry's pre-eminent representative voice, as well as the peak industry association and certification body for bottled water standards covering both bottlers and suppliers in Australia, New Zealand and the South Pacific.

The Australian Beverages Council

The ABCL is the peak body representing the collective interests of the non-alcoholic beverages industry. The unified voice of the ABCL offers our Members a presence beyond individual representation in order to promote fairness in the standards, regulations, and policies concerning non-alcoholic beverages.

Further Information

For further information related to the bottled and packaged water industry or any other non-alcoholic beverage category, please visit australianbeverages.org, t +61 2 9698 1122 or e info@ausbev.org.